



Naval Complexes Meeting

August 19, 2019

CALTRANS Volume Data
For
June, July 2019

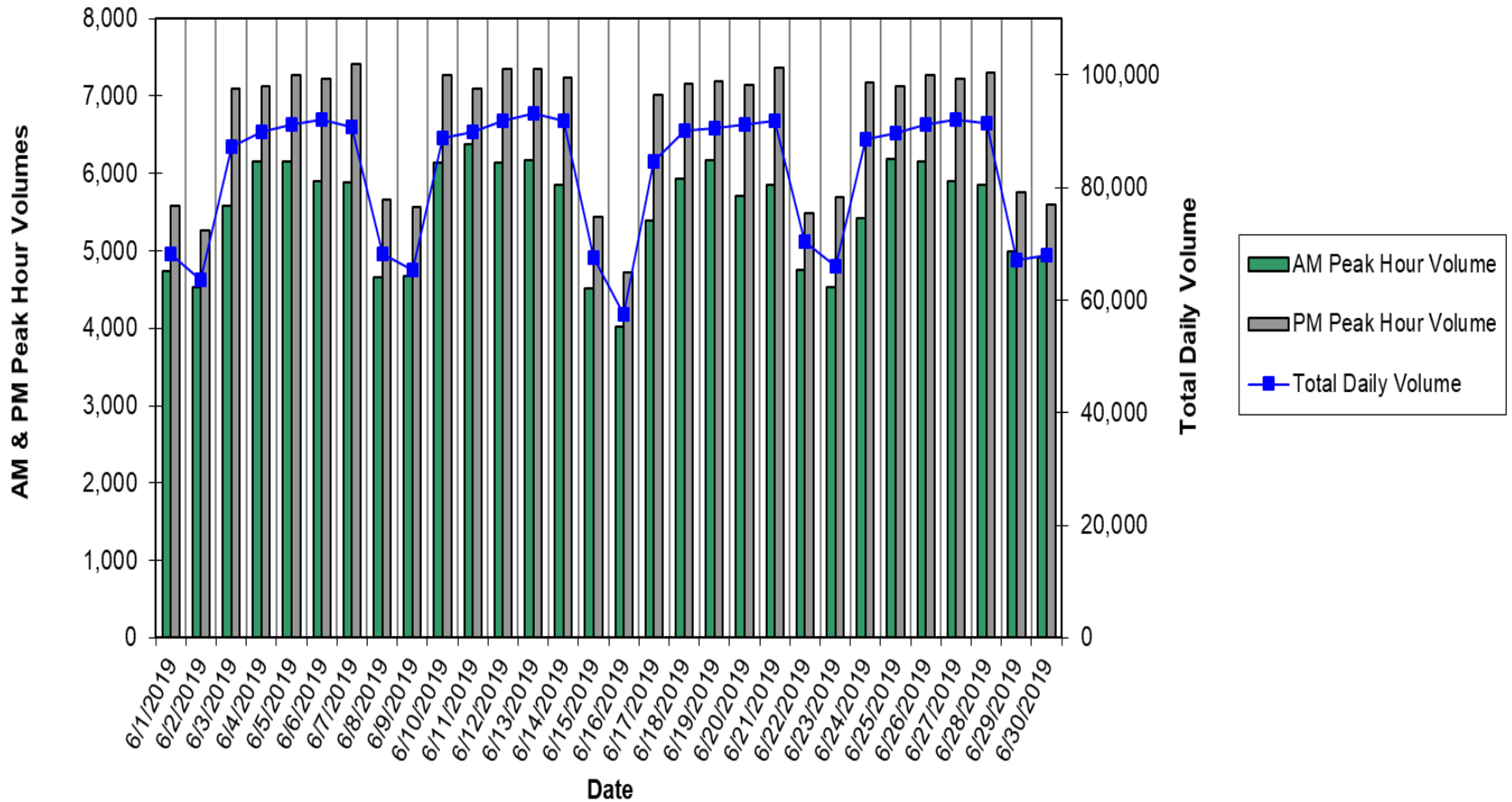
BRIDGE TRAFFIC VOLUMES – JUNE 2019

| Traffic Volume Breakdown | | | | This Month | Last Month | This Month Last Year |
|--|----|---------|---------|------------|------------|----------------------|
| Average Weekday Northbound (Outbound, ADT) | | | | 41,030 | | 46,345 |
| Average Weekday Southbound (Inbound, ADT) | | | | 49,387 | | 45,120 |
| Average Weekday Totals | | | | 90,417 | | 91,465 |
| Average Weekend Totals | | | | 66,184 | | 69,456 |
| Average Monthly Peak Hour Northbound | | | | 4,123 | | 4,666 |
| 2:00 PM | to | 3:00 PM | Weekday | | | |
| Average Monthly Peak Hour Southbound | | | | 4,032 | | 3,816 |
| 6:00 AM | to | 7:00 AM | Weekday | | | |

BRIDGE TRAFFIC VOLUMES – JUNE 2019

Total Volumes

1 CARRIERS



BRIDGE TRAFFIC VOLUMES – JULY 2019

| Traffic Volume Breakdown | | | | This Month | Last Month | This Month Last Year |
|--|----|---------|---------|------------|------------|----------------------|
| Average Weekday Northbound (Outbound, ADT) | | | | 40,319 | 41,030 | 46,814 |
| Average Weekday Southbound (Inbound, ADT) | | | | 48,058 | 49,387 | 45,697 |
| Average Weekday Totals | | | | 88,377 | 90,417 | 92,724 |
| Average Weekend Totals | | | | 69,268 | 66,184 | 74,464 |
| Average Monthly Peak Hour Northbound | | | | 3,997 | 4,123 | 4,716 |
| 2:00 PM | to | 3:00 PM | Weekday | | | |
| Average Monthly Peak Hour Southbound | | | | 3,686 | 4,032 | 3,694 |
| 6:00 AM | to | 7:00 AM | Weekday | | | |

BRIDGE TRAFFIC VOLUMES – JULY 2019

Total Volumes

0 CARRIERS

